

REVIEW

Open Access

# Epigenetic regulation of retinal development



Reza Raeisossadati<sup>1,3</sup>, Merari F. R. Ferrari<sup>1</sup>, Alexandre Hiroaki Kihara<sup>2</sup>, Issam AlDiri<sup>3</sup> and Jeffrey M. Gross<sup>3\*</sup> 

## Abstract

In the developing vertebrate retina, retinal progenitor cells (RPCs) proliferate and give rise to terminally differentiated neurons with exquisite spatio-temporal precision. Lineage commitment, fate determination and terminal differentiation are controlled by intricate crosstalk between the genome and epigenome. Indeed, epigenetic regulation plays pivotal roles in numerous cell fate specification and differentiation events in the retina. Moreover, aberrant chromatin structure can contribute to developmental disorders and retinal pathologies. In this review, we highlight recent advances in our understanding of epigenetic regulation in the retina. We also provide insight into several aspects of epigenetic-related regulation that should be investigated in future studies of retinal development and disease. Importantly, focusing on these mechanisms could contribute to the development of novel treatment strategies targeting a variety of retinal disorders.

**Keywords:** Epigenetics, Retina, Histone, DNA methylation, lncRNA, Development, Chromatin

## Introduction

During retinal development, distinct neuronal subtypes are generated sequentially, and in a precise order, from the same pool of retinal progenitor cells (RPCs) [1]. Progenitor traits are gradually lost during neurogenesis as RPCs acquire specific neuronal characteristics and differentiate. Deciphering the molecular events that occur during the transition from RPCs to differentiated neurons is critical for understanding how the retina is built during development. Conceptually, cell fate determination and lineage maintenance rely on a complex interplay between regulatory mechanisms at both the DNA and chromatin levels. Indeed, processes such as post-translational histone modifications, chromatin remodeling, histone turnover, DNA methylation, and the activity of long non-coding RNA (lncRNAs) affect nuclear processes like chromosome compaction, chromatin accessibility, transcription and DNA repair that in turn can modulate cell fate specification and differentiation events during

development (Fig. 1) [2–4]. There is a growing understanding of this complexity in a variety of central nervous system (CNS) tissues, including the retina [5, 6].

The retina is a highly accessible part of the vertebrate central nervous system. As such, it constitutes an ideal organ in which to perform experimental manipulations to better understand the epigenetic regulation of neural development. The mature retina is composed of seven cell types (Fig. 2): rod and cone photoreceptors; interneurons—horizontal cells, bipolar cells and amacrine cells; output neurons—retinal ganglion cells (RGCs); and a single glial cell type—the Muller glia. These cells are arranged into a precise laminar organization within the mature retina, generating five principal layers: three of these are cellular—the outer nuclear layer (ONL), inner nuclear layer (INL) and ganglion cell layer (GCL) and two are primarily synaptic—the outer plexiform layer (OPL) and inner plexiform layer (IPL). The retina develops from a pool of RPCs and all retinal cell types and subtypes are generated from this same population of RPCs in a relatively short time window. This rapid development from a common pool of cells is accompanied by coordinated changes in chromatin structure to accommodate developmental transitions and differentiation waves [4, 7]. In this review, we focus on the epigenetic regulation

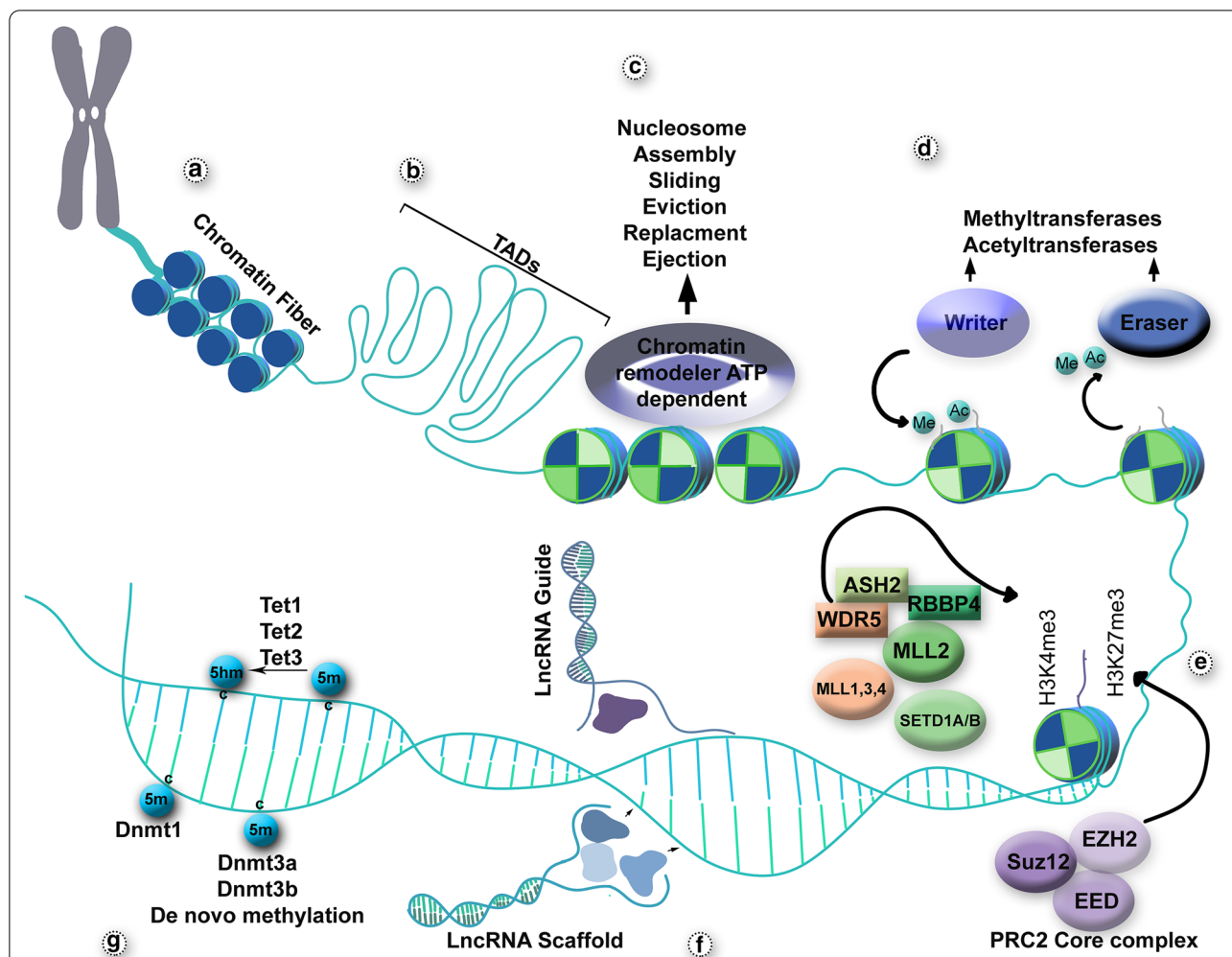
\*Correspondence: grossjm@pitt.edu

<sup>3</sup> Departments of Ophthalmology and Developmental Biology, Louis J. Fox Center for Vision Restoration, University of Pittsburgh School of Medicine, Pittsburgh, PA, USA

Full list of author information is available at the end of the article



© The Author(s) 2021. This article is licensed under a Creative Commons Attribution 4.0 International License, which permits use, sharing, adaptation, distribution and reproduction in any medium or format, as long as you give appropriate credit to the original author(s) and the source, provide a link to the Creative Commons licence, and indicate if changes were made. The images or other third party material in this article are included in the article's Creative Commons licence, unless indicated otherwise in a credit line to the material. If material is not included in the article's Creative Commons licence and your intended use is not permitted by statutory regulation or exceeds the permitted use, you will need to obtain permission directly from the copyright holder. To view a copy of this licence, visit <http://creativecommons.org/licenses/by/4.0/>. The Creative Commons Public Domain Dedication waiver (<http://creativecommons.org/publicdomain/zero/1.0/>) applies to the data made available in this article, unless otherwise stated in a credit line to the data.

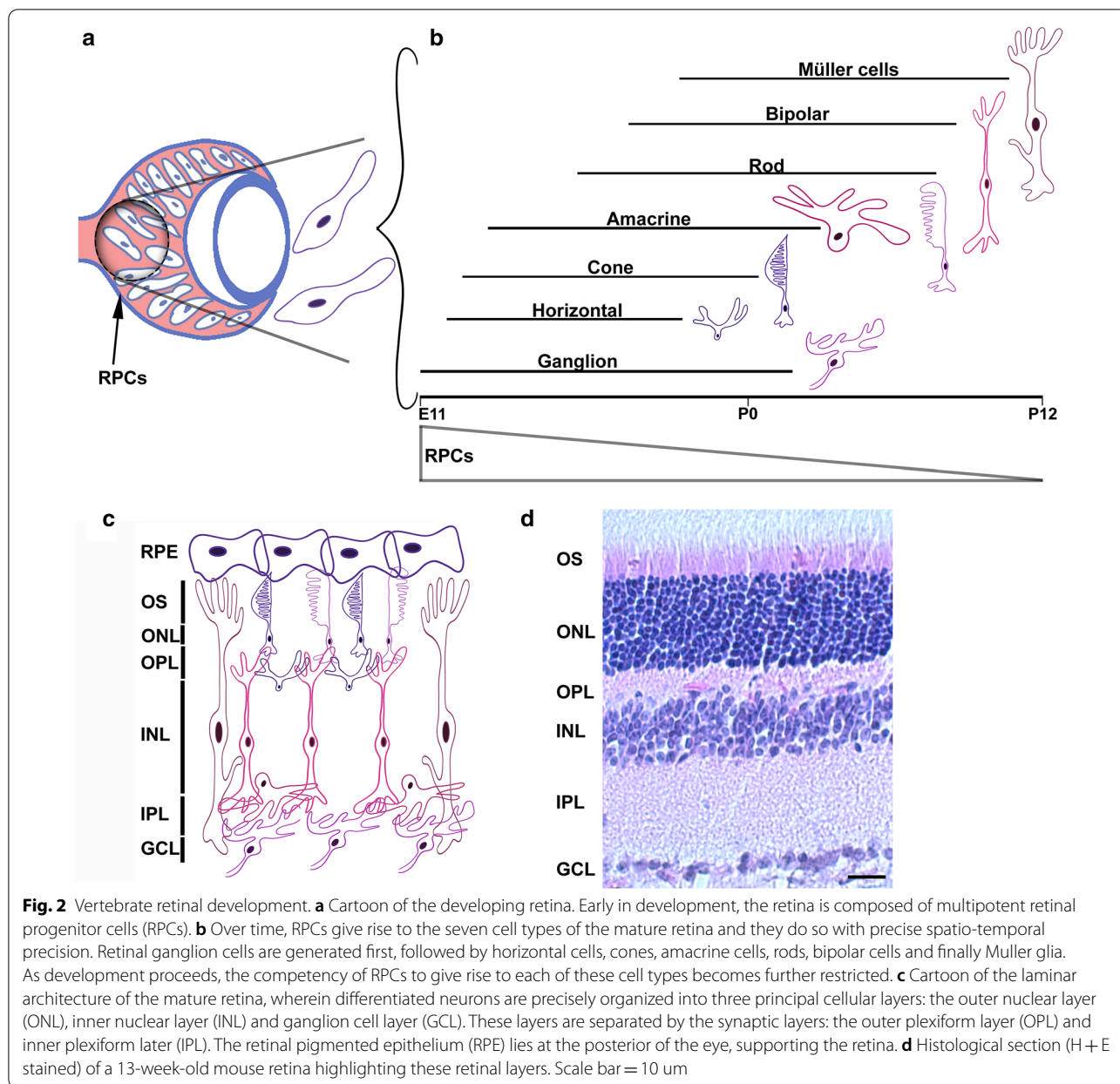


**Fig. 1** Schematic depiction of the various layers of epigenetic regulation involved in cell fate determination and differentiation events. **a** Chromatin folding can be considered as the first layer of transcriptional regulation; nucleosomes are assembled and form 30-nm fibers. **b** Topologically associating domains (TADs) are genomic regions spanning 0.2 to 1 Mb considered as defined regulatory and structural units. **c** Binding of ATP-dependent chromatin remodelers to chromatin exposes sites for transcriptional regulation. **d** Histone tails are subjected to different covalent modifications mainly on their lysine residues. Enzymes known as “writers” (acetyltransferases and methyltransferases) are responsible for adding these modifications, while “erasers” (deacetylases and demethylases) remove them. **e** Various proteins and protein complexes are involved in establishing bivalent histone marks; the most abundant subunits are components of the PRC2 core complex, which catalyze H3K27 methylation and MLLs, which catalyze H3K4 methylation. **f** LncRNAs fine-tune gene expression in several ways, such as guiding proteins to a specific location in the genome or acting as a scaffold for other regulatory components. **g** DNA methyltransferases, such as Dnmt1, Dnmt3a and Dnmt3b add or maintain methyl groups on cytosine residues (5-methylcytosine), while members of the ten-eleven translocation (Tet) family catalyze the oxidation of 5-methylcytosine to 5-hydroxymethylcytosine, which can then be further converted to other intermediates or removed to demethylate the DNA

of retinal development and maintenance, taking a broad view of epigenetic processes and discuss several examples of functional crosstalk between these regulatory processes during retinal development. Epigenetic analyses during retinal development are still in their early stages and therefore many questions remain to be answered. We touch on several of these throughout the review and discuss several examples of potential epigenetic underpinnings of ocular disease.

**Histone modifications and chromatin state dynamics during retinogenesis**

In eukaryotic cells, histones are proteins that function to condense the DNA into nucleosomes. The major histones are the core histones, H2A, H2B, H3 and H4, along with the linker histones H1/H5 [8]. Chromatin states are dynamic and are defined by the individual or combinatorial chemical modifications on the N-terminal tails of the histones, which lead to transcriptional



activation or repression [9]. Many studies have investigated histone modifications during retinal development using histological and biochemical approaches, and more recently by employing a variety of next-generation sequencing technologies. Using immunohistochemical techniques, H3 lysine 4 trimethylation (H3K4me3), a mark of active chromatin, and H3 lysine 27 trimethylation (H3K27me3), a mark of repressed chromatin, were detected in the embryonic and adult mouse retina [10]. However, the distribution of histone modifications is highly dynamic and cell type-specific; for example, genes expressed in mature rod

photoreceptors have a unique accumulation pattern of H3 lysine 4 dimethylation (H3K4me2) at the transcription start site (TSS), which is associated with increased transcription [11]. Indeed, histone marks such as H3K4me1, H3K4me2, H3K4me3, H3K27me3, H3K27ac are dynamically enriched at specific loci to regulate the temporal kinetics of gene expression. H3K4me1 and H3K27ac are enriched at enhancers of genes that are actively transcribed in RPCs, and absent from those regulating genes expressed in mature cones and rods [7]. Conversely, during early postnatal stages and in mature rods and cones, H3K27ac and H3K4me3

accumulate at active promoters controlling the expression of rod- and cone-specific photoreceptor genes [7, 12].

Adding further complexity to chromatin state logic, studies have found that the active H3K4me3 and repressive H3K27me3 modifications may coexist on genomic loci [13]. Such “bivalent” marks have generated much interest over the last decade particularly because of their roles in stem cells [13]. Bivalent domains are established in stem cells on silenced developmental genes rendering them in a poised state, that is subsequently resolved into permanent repression or activation during differentiation [14]. It seems that the bivalent domain is also utilized during retinogenesis in a similar manner to control retinal gene expression during development. For instance, during early development, the promoter of syntaxin 3 (*Stx3*), a gene expressed in mature rod cells, is enriched with bivalent modifications (i.e., H3K27me3 and H3K4me3/H3K27Ac), while in differentiated rods, H3K27me3 is depleted at the promoter [4].

To facilitate an understanding of the dynamics of histone marks in a biologically meaningful way, a machine-learning algorithm, called chromatin Hidden Markov Modeling (chromHMM) was developed to catalogue different histone marks into groups or “states” [15]. While this statistical method is far from perfect, it enables a better understanding of the dynamics of chromatin signatures during development. chromHMM analyses of retinal development and in retinal pigment epithelium (RPE) cells have revealed dynamic changes in chromatin regulation [4, 16]. A caveat to the RPE study is that it used a limited number of histone marks to generate chromatin states. Still the study revealed that the majority of promoters possess open or active chromatin (i.e., an empty or permissive state) [16]. In the developing retina, 11 chromatin states were identified in human and mouse from ChIP-Seq data of 11 histone marks and chromatin-associated proteins [4]. chromHMM modeling demonstrated that the percentage of a gene (+/−2 kb) or promoter (TSS-2 kb) containing bivalent histone marks at P0 is two times larger than P21, which suggests that the majority of the fate determination genes are in a poised state, and upon a specific trigger, the repressive mark would be erased [4]. However, these data were obtained from whole retinae rather than distinct retinal cell types and therefore it will be important in future analyses to assess chromatin states from each cell type and at different time points during their development to fully understand the regulatory logic imposed by chromatin modifications on these fate decisions and differentiation events.

## Histone variants

Histone variants are histones that replace core histones to further modulate nucleosome structure and activity. H2A.B, H2A.Z, H2A.X, macroH2A, and H3.3 are the most common variants and these are highly conserved across species [17]. While little is known about how these variants might contribute to retinal development, many histone variants are expressed in neural tissues, pointing towards a possible role in neurogenesis. For example, recent studies have shown that mutations in the histone variant H3.3 (but not canonical histone H3) drive pediatric brain tumors by promoting stem cell-like properties within glioblastoma cells [18, 19], underscoring the need to understand their contribution to the transition from proliferation to differentiation during neural differentiation. Knockdown of *H2A.Z* in embryo bodies (EBs) results in impairment of neural differentiation in the presence of retinoic acid (RA), suggesting that *H2A.Z* plays a critical role in cell fate transitions and lineage commitment [20]. Histone H2A.X is also involved in the DNA damage response and DNA repair during hypoxia-dependent neovascularization. Under hypoxic conditions, H2A.X and its C-terminal phosphorylated form, gamma-H2A.X, play an essential role in maintaining endothelial cell proliferation [21]. In *H2A.X*<sup>−/−</sup> mice subjected to hypoxic conditions, retinal angiogenesis decreased when compared to wild-type mice [21]. This decrease in retinal neovascularization correlated with an increase in endothelial cell apoptosis and decreased endothelial cell proliferation, suggesting a possible avenue for development of therapeutics aimed at preventing neovascularization in diseases like retinopathy of prematurity and diabetic retinopathy [21].

In addition to the core histones and their variants, data also point toward a possible role of the linker histone (H1) and its variants during retinal development. Studies on rod photoreceptor development in mice have shown that the total level of histone H1c increases, concomitant with the increase in the length of the nucleosomal repeat from 190 to 206 bp [22]. Triple *H1c/H1e/H10* knockouts result in decreased heterochromatin area, larger nuclei and impairment of the structural integrity of rods [22], possibly linking defects in chromatin condensation to rod physiology. Among all histone H1 variants, *Hist1h1c* has the highest expression levels in the mouse retina [23]. Knockdown of *Hist1h1c* in *Ins2*<sup>+/+</sup> and *Ins2*<sup>+/-</sup> mice (a diabetic retinopathy model) resulted in increased expression of autophagy markers, such as LC3B-I and LC3B-II, and repressed the diabetes-induced transcription of proinflammatory factors [23]. On the other hand, overexpression of *Hist1h1c* in the retina resulted in ectopic induction of autophagy and diabetic retinopathy-like phenotypes. In this model, the number of cells in the

GCL decreased and the INL and IPL thickness were reduced, suggesting that Hist1h1c levels may contribute to the regulation of autophagy, inflammation, and neuron loss, similar to diabetic retinopathy [23]. Considering the importance of histone variant deposition, turnover, and histone chaperones as regulators of chromatin dynamics, elucidating their role in retinal development is likely to reveal important roles during retinal cell fate determination and lineage commitment.

### Histone-modifying enzymes and their functions during retinal development

Several enzymes orchestrate post-translational modification (PTM) of histones through the addition or removal of different chemical groups on histone tails, and these are critically important in regulating chromatin structure and function. Most histone-modifying enzymes are ubiquitously expressed, yet it has become clear that their roles are context-specific [24]. Furthermore, these proteins can have chromatin-independent functions in a variety of cellular process, further underscoring the importance of studying their tissue-specific functions [25, 26]. Here, we discuss some of the known roles of histone modifications and chromatin-modifying enzymes during retinal development.

#### Modifying enzymes: writers

Histone acetyltransferases and methyltransferases are two main classes of histone “writers” that act as molecular switches to maintain the active or silenced states of target loci, respectively [27]. Histone acetyltransferases add acetyl (CH<sub>3</sub>CO) groups, while methyltransferases catalyze the addition of a methyl (CH<sub>3</sub>) group to lysine residues on histone tails [28]. Of those, the evolutionarily conserved Polycomb (PcG) and Trithorax (TrxG) were first discovered in *Drosophila melanogaster* as master regulators of Hox gene expression and found to play important roles in embryonic stem (ES) cell self-renewal, cell fate choice, proliferation, apoptosis, cell cycle regulation, plasticity and regeneration [29–31]. PcG forms at least two main repressive complexes: Polycomb repressive complex 1 (PRC1) and Polycomb repressive complex 2 (PRC2) [32, 33]. Methylation of lysine 27 on histone H3 (H3K27me) is catalyzed by the activity of PRC2; as a consequence, PRC1 is recruited, and this leads to a cascade of gene-silencing events [34, 35].

PRC1 and PRC2 complex functions have been studied during retinal development. For instance, the PRC1 component *Bmi-1* is expressed in immature RPCs and differentiated cones, where it is required for cone maintenance [36]. Indeed, *Bmi-1* deficiency resulted in misregulated proliferation and self-renewal of RPCs [37]. Rybp is an evolutionarily conserved zinc finger protein

that is a non-canonical PRC1 member and functions as a transcriptional repressor, acting through histone modification. Rybp deficiency is embryonic lethal during early stages of development [38, 39]; however, studies of chimeric mice consisting of Rybp mutant and wild-type cells indicate that Rybp function is essential for anterior segment and retinal development [40]. Loss of a single *Rybp* allele leads to retinal coloboma (a failure of optic fissure closure), while overexpression of *Rybp* in the lens causes abnormal fiber cell differentiation, and lens opacification [40]. Moreover, ubiquitous Rybp overexpression in the eye results in abnormal retinal folds and corneal neovascularization [40]. *Samd7*, another PRC1 component, is predominantly expressed in the photoreceptor layer of the developing retina and loss of its function leads to derepression of non-rod genes, likely due to loss of the repressive mark H3K27me3 [41]. Furthermore, *Samd7* may serve as transcriptional repressor involved in fine-tuning of the transcription factor cone-rod homeobox (*Crx*), a critical transcriptional regulator of photoreceptor development [42].

The roles of the PRC2 and its core subunits have also been investigated during retinogenesis [43–45]. Enhancer of zeste homolog 2 (*Ezh2*) serves as a catalytic subunit of PRC2 and functions primarily in the establishment of lysine H3K27 modifications that repress expression of target loci [46]. *Ezh2* is strongly expressed in the embryonic retina and expression decreases after birth [47]. *Ezh2* directly or indirectly influences retinal cell differentiation and maturation as conditional knockout of *Ezh2* in retinal progenitor cells results in microphthalmia, reduction in postnatal progenitor proliferation, and accelerated differentiation of rods and Müller glia [43, 45]. Beyond changes in histone modifications at target loci, the expression of several critical rod genes such as *Pnr*, *Nrl*, and rhodopsin is also changed during embryonic stages following *Ezh2* knockout [45]. Interestingly, the deletion of *Ezh2* in retinal progenitors at embryonic stages also results in gradual photoreceptor degeneration throughout postnatal life, possibly through the de-repression of *Six1* and photoreceptor-related genes [48].

The core component of PRC2, *Eed* (Embryonic ectoderm development), also plays a crucial role during retinal development. Conditional knockout of *Eed* at postnatal stages results in severe defects in retinal lamination, a depletion of RPCs and an increase in the proportion of early-born amacrine cells at the expense of late-born cell types such as Müller glia [43]. In conditional knockouts of *Eed*, H3K27me3 and H3K4me3 are enriched on the promoters and gene bodies of amacrine-specific genes, and this activity is essential for amacrine cell fate determination and differentiation [43]. Similar to *Ezh2* knockout, *Eed* conditional knockouts also possess

reduced RPC proliferation and increased cell death at postnatal stages, which resulted in disruption of late-born retina cells such as Müller glia, bipolar, and rod photoreceptor generation [43]. These results are consistent with those in *Drosophila* where mutation in *E(z)* and *Su(z)12*, the *Drosophila* counterparts of the vertebrate PcG components Ezh1/Ezh2 and Suz12, respectively, result in eye discs that are substantially smaller than the wild-type [49]. In *Drosophila*, PcG targets the majority of master regulator transcription factor genes involved in eye development (e.g., *eya*, *so*, *dac*, *eyg*) and similarly, in humans and mice PRC1 and PRC2 also target retinal specification and patterning genes (e.g., *SHH*, *WNT3A*, *SIX1*, *PAX3*, *PAX6*, *Six6*, *Pax6*, *Shh*, *Otx1*) [50]. These data indicate that PRC2 acts on broad ranges of retinal and non-retinal genes and has stage-specific functions during retinal differentiation and maturation.

Another repressive enzyme is G9a, a nuclear histone lysine methyltransferase (HMT) that mainly catalyzes histone H3 lysine 9 mono- and di-methylation, which are linked to transcriptional silencing [51]. G9a and PRC2 have several common target genes that encode proteins which are mostly involved in neural development and differentiation [51]. Conditional *G9a* knockout results in retinal defects including the formation of photoreceptor rosettes, mislocalization of RPCs, prolonged RPC proliferation and elevated cell death [52]. Whether G9a and PRC2 activities are coordinated during retinal development remains to be explored.

TrxG proteins mediate histone methylation and chromatin remodeling activity, which leads to the maintenance of chromatin in an active mode; moreover, TrxG family proteins mainly act via nucleosome remodeling or histone modification, the latter of which includes H3K27ac, H3K4me3 and dimethylation of Lys36 on histone H3 (H3K36me2) [53]. Mixed-lineage leukemia 1 (Mll1), a TrxG member, acts as an H3K4me1-3 writer [54, 55]. Conditional knockout of *Mll1* in mouse results in deficits in visual function, morphological defects in the retina that include altered cell type composition, a reduction in INL thickness, likely due to reduction of the progenitor cell pool, and defects in horizontal cell morphology and survival [56]. Mll3/4 is the mammalian counterpart of *Drosophila* trithorax-related (Trr), and functions as an H3K4 monomethyltransferase [57]. Trr activity can suppress cell growth in *Drosophila* eye imaginal discs by reducing H3K4 monomethylation and thereby affect multiple growth-promoting pathways [57, 58]. Given that Mll complexes are associated with transcriptional activation, it is likely that their function is mediated by transcription factors that promote cell type-specific differentiation programs. Indeed in the developing photoreceptors of the mouse retina, NRL (a

key transcription factor that promotes rod photoreceptor differentiation) recruits the histone acetyltransferase, Kat5 (Tip60), to activate transcription of the rod-specific downstream targets *Ppp2r5c* and *Rhodopsin* via H3/H4 acetylation [59], while the cone-rod homeobox transcription factor Crx, facilitates the binding of the histone acetyltransferase p300/CBP to Crx-regulated photoreceptor promoters [60]. Conditional knockout of *p300/CBP* resulted in misregulation of photoreceptor-related genes via reduction of histone H3/H4 acetylation [60]. Beyond the developing retina, p300/CBP is also crucial for lens induction, as conditional knockout of *p300/CBP* in the developing lens placode resulted in aphakia (absence of the lens) [61]. This phenotype may result from reduced expression of *Six3*, *Sox2*, *Otx1*, and *Pitx3*, which together play pivotal roles in regulating lens formation [61].

Collectively, the studies discussed above demonstrate the importance of histone writers in modulating several aspects of retinal development. While most of them seem to be essential for retinal proliferation, their roles during retinal differentiation and cell type specification vary, which highlights the need for in depth analysis of their genome-wide roles in regulating distinct retinal cell fate determination events during development.

#### Modifying enzymes: erasers and readers

The main types of histone “erasers” are histone demethylases and histone deacetylases. These enzymes remove acetyl or methyl groups from histone lysine residues [62–66]. The Jumonji family of histone demethylases and lysine-specific histone demethylase 1 (LSD1) proteins act as erasers of lysine methyl marks on histones [62, 64]. Histone deacetylases (HDACs) are responsible for removing the acetyl group from lysine residues on histone proteins [66]. With regard to “readers”, numerous proteins containing domains such as bromo-adjacent homology (BAH), chromodomain, PHD (plant homeodomain), tandem Tudor domain (TTD), double chromodomain (DCD), WD40 and the zinc finger CW (zf-CW) have been recognized as readers of methyl lysine [67]. Bromodomain proteins are the most well-characterized acetyl lysine reader [67].

Members of the Jumonji protein family possess a conserved JmjC domain which functions in histone demethylation via a mechanism involving an oxidative reaction that requires  $\alpha$ -ketoglutarate ( $\alpha$ KG) and iron Fe(II) as cofactors [68]. Twenty-seven different JmjC domain proteins have been detected in the human genome the functions of most of which have yet to be explored, including in the retina [68]. Kdm6b, which demethylates H3K27me3/me2, is expressed in the INL during late stages of murine retinal development [69]. Knockdown of

*kdm6b* results in a decrease of *Bhlhb4* and *Vsx1* expression, critical transcription factors in the differentiation of rod-ON bipolar cells and cone-OFF bipolar cells. The loss of the Kdm6b in mouse retina leads to failure in the differentiation of these two subsets of bipolar cells [69, 70], while pharmacological disruption of Kdm6b causes increased RPC proliferation and reduction of bipolar cells [71]. In the developing *Xenopus* eye, Kdm6b is expressed in the inner regions of optic cup, but its role in the optic cup has not been functionally investigated [72].

In *Xenopus*, the lysine-specific histone demethylase 5C (Kdm5c) is also expressed in the embryonic eye and knockdown of Kdm5c results in smaller and deformed eyes, perturbed retinal lamination and abnormal RPE formation [73]. Knockout of *Jmjd6* (*Ptdsr*) in mouse results in severe disruption in eye formation, with defects ranging from impaired retinal neuron differentiation to complete unilateral or bilateral anophthalmia [74]. Fbxl10 (Kdm2b) is a JmjC domain-containing histone demethylase; homozygous mutation in *Fbxl10* results in neural tube closure defects, an expanded retina and retinal coloboma [75].

LSD1 (Kdm1a) was the first protein lysine demethylases discovered [76]. In the mouse retina, Lsd1 is highly expressed at postnatal stages and expression gradually decreases over time [77]. Pharmacological inhibition of Lsd1 in retinal explants at early postnatal stages results in misregulation of genes associated with progenitor function and impaired rod formation [78]. With respect to retinal disease, global levels of H3K27me3 are increased in *rd1* mice, a model of retinitis pigmentosa, and application of the histone methyltransferase inhibitor, 3-deazaneplanocin A (DZNep) to postnatal retinal explants results in a reduction of calpain activity (a marker of dying cells), delayed photoreceptor loss and improved the light-adapted electroretinogram. These data suggest that modulation of histone modifications could be a potential therapeutic candidate for treating retinal degenerative diseases [79].

Histone deacetylases also play a role in retinal development. It has been shown pharmacological inhibition of Hdac1 activity in mouse impairs rod photoreceptor differentiation [80]. Mechanistically, it is thought that these defects result, in part, through the misregulation of progenitor-specific genes such as *Hes1* and *Vsx2* via concomitant increases in acetylation of histone 4 lysine 12 (H4K12) and H3K9 [80]. In zebrafish, *hdac1* mutation resulted in reduction in *cyclin D* and *E* expression and failure of RPCs to exit the cell cycle [81]. *hdac1* function is vital for retina and optic stalk differentiation; in *hdac1* mutants, retinal lamination is disrupted and differentiated RGCs and photoreceptors are absent [81]. Sirt1 is a nicotinamide adenosine dinucleotide

(NAD)-dependent deacetylase; knockout of *Sirt1* in mouse resulted in abnormal closure of the optic fissure, thinner and disorganized plexiform layers, and defects in the formation of photoreceptor inner and outer segments. These defects were thought to potentially result from hyperacetylation of p53 [82]. In summary, while the majority of lysine demethylases and deacetylases have not yet been well studied in the retina, these findings suggest that they play a critical role during ocular development and their misregulated activity could potentially contribute to retinal disease.

## Nucleosome remodeling and chromatin accessibility

### Chromatin remodeling and structure

Chromatin remodeling complexes play pivotal roles in neural development and differentiation [83]. During neural differentiation, chromatin remodeling factors change their subunit composition concomitant with transition from proliferation to differentiation, underscoring the highly specific function of these subcomplexes during neural differentiation [84]. Indeed, several studies have identified distinct roles for chromatin remodeling enzymes in the retina. BRG1 (Smarca4), a subunit of the SWI/SNF complex, is essential for retinal lamination and overall retinal development in mice and zebrafish [85–87]. Inactivation of *Brg1* in mice results in microphthalmia and defects in photoreceptor differentiation [87]. Snf2h (Smarca5), another subunit of SWI/SNF, is critical for lens differentiation via maintaining the balance between epithelial and fiber cell differentiation in mouse; however, roles in retinal development have not yet been identified [88]. Brm, a SWI/SNF subunit, is essential for RGC differentiation and acts by modulating *Brn3b* expression [89]. During embryonic stages, Baf60c, another subunit of SWI/SNF, is expressed in retinal progenitors; overexpression of Baf60c in RPCs results in enhanced proliferation [90]. Chromodomain-helicase-DNA-binding protein 7 (CHD7) plays a role in chromatin organization and is mutated in a number of human diseases including CHARGE (coloboma of the eye, heart defects, atresia of the choanae, retardation of growth/development, genital abnormalities, and ear anomalies) syndrome. In zebrafish *chd7* morphants, eyes are smaller and retinal organization is disrupted with a reduction in RGC numbers and a lack of photoreceptor layer maturation [91]. Conditional *Chd7* knockout in mice also resulted in dysmorphic eyes with unrecognizable optic cups and small lenses [92]. There are numerous other chromatin remodeling proteins and it will be of interest to determine whether they play roles during retinal development and/or in specific retinal cell types, as well as during the progression of retinal diseases.

### High-order chromatin structure and gene regulation

Chromatin compartmentalization and nuclear localization also play an essential role in retinal development. The nucleus of retinal neurons, just like any other conventional nucleus, has centralized euchromatin, and condensed heterochromatin adjacent to the nuclear lamina [93]. Rod cells, however, have an inverted nuclear organization where heterochromatin is located centrally. Evidence indicates that this unique chromatin distribution contributes to a reduction in light loss, thus improving the ability of nocturnal animals to see in the dark [94, 95]. The molecular mechanisms contributing to nuclear organization have begun to be revealed, as nuclear envelope proteins, such as lamin B receptor (Lbr) and laminA (Lmna), are responsible for establishing the conventional nuclear organization [94]. During photoreceptor differentiation in mice, rod precursors gradually lose the expression of *Lbr* and *Lmna* leading to inverted chromatin architecture in fully differentiated rods [94]. Indeed, in *Lbr<sup>ic-/ic-</sup>* mutant mice, heterochromatin is not tethered to the nuclear lamina in inner nuclear layer cells, while overexpression of Lbr in the retina disrupts the inverted architecture of the rods [93]. The relevance of this unique nuclear architecture on gene expression and retinal function remains poorly understood; indeed, conditional knockout of Lbr in mice reveals only minor differences in gene expression between knockouts and littermate controls and no effect on visual function [93]. Finally, chromatin-modifying enzymes may also contribute to the regulation of nuclear architecture; for example, *Casz1* is a transcriptional factor that interacts with the Polycomb members Ring1b, Suz12, and Hdac2, and depletion in the mouse retina results in reduced expression of lamin A/C and chromatin inversion in rods [96].

The transition of euchromatin to heterochromatin has a direct influence on the regulation of gene expression in the retina; for example, *Car10*, a gene that is expressed in bipolar cells but not in rods, is sequestered to facultative heterochromatin in rod nuclei [93]. While this type of unique localization is not a common feature of all genes that are repressed in rod cells it might provide an added level of gene regulation to repressed genes by limiting transcription factor accessibility to those genes [93]. Fluorescent in situ hybridization (FISH) is an invaluable method to visualize genome organization that has been leveraged to shed light on the dynamics of promoter–enhancer interactions during retinal development and how they are influenced by chromatin compartmentalization. For example, it has been shown that a loss of interaction between *Sox2* and its enhancer during retinal development is associated with sequestration of the *Sox2* enhancer into facultative heterochromatin [93]. Through techniques like this, predicting gene expression,

non-coding DNA regions and *cis*-regulatory elements based on genome localization and accessibility is a powerful approach to study the genomic landscape.

Analysis of open chromatin with methodologies such as DNase hyper-sensitivity and ATAC-seq coupled with assays to investigate 3D chromatin structure (i.e., Hi-C) have provided insights into the relationship between chromatin structure and gene expression during retinal development and in distinct retinal cell types. Indeed, the genome-wide mapping of accessible chromatin with ATAC-seq in rods and cones of mature mice demonstrated that in rods, thousands of loci are selectively closed relative to those in blue and green cones. This may be due to the regulatory role of *Nrl*, as in *Nrl<sup>-/-</sup>* photoreceptors, the global chromatin accessibility of rods is similar to other cell types [97]. The LIM homeodomain transcription factor *Lhx2* is expressed in the developing mouse retina and in specific cell types of the adult retina [98]. In RPCs, *Lhx2* is involved in regulation of local and global chromatin accessibility; conditional *Lhx2* knockout in RPCs results in loss of accessibility of *Lhx2* targets [98]. It was proposed that *Lhx2* regulates chromatin accessibility by competition for nucleosome occupancy, which could have a substantial impact on the regulation of gene expression [98]. The 3D chromatin landscape of the mouse retina has been mapped during embryonic (E14.5), postnatal (P0) and adult stages by ultra-deep in situ Hi-C and the results of this comprehensive analysis demonstrated that the enhancer-promoter interactions and chromatin compartments are dynamic at different developmental stages [93]. Integrating single-cell ATAC-seq (scATAC-seq) and single-cell RNA-seq with these data identified putative developmental stage-specific super-enhancers (SE), including one regulating *Vsx2* expression, deletion of which resulted in a loss of bipolar cells [93].

Analysis of chromatin accessibility and gene expression have also been recently performed in developing human retinae and human (h) iPSC-derived retinal organoids, expanding our understanding of human retinal development as well as the potential uses and limitations of iPSC-derived retinal organoids and their constituent cell types in modeling and treating human retinal disease. For example, integration of RNA-Seq data from the developing human retina with DNase-seq data at two fetal stages (Day 74 and Day 125) revealed a strong association between chromatin accessibility and gene expression, which could then be used to predict putative gene regulatory networks regulating human retinal development [99]. A comparative study of chromatin accessibility (via ATAC-Seq) and gene expression between developing human retinae from gestational week (GW) 6 to 25 and similarly staged



hiPSC-derived retinal organoids revealed that while chromatin accessibility and gene expression in retinal organoids are quite similar overall to the in vivo retina, there are, however, stage-specific differences [100]. In particular, accessible chromatin regions during the middle stages of human retinal development (GW10 to 25) were accessible only in late stage (week 23 to 30) hiPSC-derived retinal organoids, and these regions were enriched in genes regulated neurogenesis and neuronal differentiation [100]. A similar phenomenon is observed in mice when ATAC-Seq data are compared from native retinæ and iPSC-derived retinal tissue; here, modest stage-specific differences in chromatin accessibility between the two systems were also identified [101]. When integrating human ATAC-Seq data and ChromHMM data from human and mouse [4], bivalent H3K4me3 and K3K27me3 marks were noted to be enriched in human neurogenesis genes that were accessible during the middle stages of development, but not in those in mouse at comparable stages, suggesting differences in the epigenetic regulation of retinal development between mice and humans. Finally, in considering the reprogramming efficiency of mouse retinal neurons into iPSCs and retinal organoids, epigenetic memory appears to play a key role where retinal neurons with lower efficiency of reprogramming, possibly as a result of sustained epigenetic memory, were able to produce more differentiated retinæ than those with higher reprogramming efficiency [102], indicating that epigenetic memory may be an important consideration in selecting and generating cells for potential use in therapeutic applications.

From a disease perspective, *Abca4*<sup>-/-</sup>*Rdh8*<sup>-/-</sup> double knockout (dKO) mice are a photosensitive model of stress-induced photoreceptor degeneration, which is widely used for modeling age-related macular degeneration (AMD) pathology [103]. Following prolonged exposure to bright light, the retina and RPE/choroid of *Abca4*<sup>-/-</sup>*Rdh8*<sup>-/-</sup> dKOs manifest a global decrease in chromatin accessibility over time, which results in gene expression changes that drive apoptosis. Importantly, while the global chromatin accessibility decreased in this model after bright light, the accessibility of genomic regions surrounding key inflammatory response genes increased following photobleaching, suggesting that changes in chromatin accessibility could contribute to reactive gliosis and apoptosis in the retina [103]. Genomic analyses of chromatin accessibility of retinal and RPE cells from AMD patients revealed a broad decrease in accessibility with AMD progression, but interestingly, accessibility decreased in RPE cells at an earlier stage than retinal cells, suggesting that defects in RPE cells is critical in disease onset [104].

### DNA methylation

DNA methylation contributes to dynamic regulation of chromatin architecture and the regulation of gene expression in many developing organs and tissues. DNA can be covalently modified through addition or removal of a methyl group predominantly to the cytosine base found in the dinucleotide sequence 5'CpG3'. DNA methylation is a heritable epigenetic mark established and maintained through the activity of DNA methyltransferase (DNMT) enzymes. Methylation is reversible where the methyl group can be removed through several mechanisms, including via the activity of ten-eleven translocase (Tet) proteins [105]. DNA methylation plays a role in developmental processes such as genomic imprinting, X-chromosome inactivation, cellular aging, cell differentiation, cell death, and gene silencing [106, 107].

In the retina, mature retinal neurons possess distinct cell-specific DNA methylation patterns [108]. For example, in the mouse retina, rod and cone cells have different methylation landscapes wherein rods possess hypomethylated DNA and a closed chromatin state relative to cones [7]. The associated genomic regions appear to be active in early developmental stages but diminish their expression in mature rods [7]. In mice, photoreceptor fate determination is tightly regulated by DNA methylation. In RPCs, the promoter and genomic regions controlling the expression of rod and cone-specific genes are highly methylated; however in mature photoreceptors these regions are unmethylated or hypomethylated relative to RPCs [109]. Recently, it has also been documented that global methylation patterns may change with age in rods; age-related DNA methylation changes are not random, but rather, they localize to specific regions, such as rod regulatory elements, which may be responsible for controlling transcription of genes involved in rod homeostasis [110].

Functional analyses of DNA methylation enzymes have implicated DNA methylation in a variety of processes regulating retinal development. Morpholino knockdown of *dnmt1* and *dnmt3* (*dnmt3bb.2*) expression in the developing zebrafish retina revealed that both genes are essential for neuronal differentiation and retinal lamination [111, 112]. Loss of function mutations affecting *dnmt1* in zebrafish also resulted in progressive degeneration of the ciliary marginal zone (CMZ), an endogenous stem cell containing zone of the peripheral retina [113], as well as severe defects in lens and retina formation [114]. Morpholino knockdown of *dnmt2* (*trdmt1*) in zebrafish, resulted in mild microphthalmia, retinal lamination defects, RPE malformation, and reduced expression of retinal cell type markers like *atoh7*, *neurod*, and *zash1a*, suggesting that DNA methylation may be involved in the differentiation of retinal

neurons [115]. Indeed, conditional knockout of *Dnmt1* in the developing mouse retina hampered the differentiation and maturation of retinal neurons and led to rapid photoreceptor degeneration [116]. Furthermore, *Dnmt1* conditional knockout in the RPE resulted in the absence of cone outer segments [117]. Mouse triple knockouts for *Dnmt1*, *Dnmt3A*, *Dnmt3B* resulted in severe retinal phenotypes such as the lack of photoreceptor outer segments, reduced outer plexiform layer size, reorganization of synaptic layers, and overall defects in visual function [118].

As stated above, DNA methylation is transient and demethylation can be initiated through the activity of the Tet enzymes which convert the methyl group to hydroxymethylcytosine and subsequently to formylcytosine and carboxycytosine, which is then removed through base excision repair [105]. These intermediates may also play distinct roles during cell specification and differentiation events during development [119]. Tet activity has been recently studied in the zebrafish retina; loss of function mutations in *tet2* and *tet3* identified a requirement for Tet activity during retinal neuron formation, possibly by modulating Wnt and Notch pathway activity [120]. Morpholino knockdown of *tet3* in *Xenopus* resulted in anophthalmia; *tet3* depletion leads to misregulation of *pax6*, *rx* and *six3* expression, suggesting a potential role during eye induction [121].

Changes in DNA methylation patterns at loci regulating eye formation may be important evolutionarily. Regression of eyes is a morphological feature of cave-adapted animals such as cavefish; loss of the eye may result as an adaptation to conserve energy in a nutrient-deficient environment [122]. The *Astyanax mexicanus* cave morph evolved from a surface morph and has lost its eyes [123]. In the eyeless morph, eye tissue degeneration is witnessed by 5 days of development, and in adulthood, the eye is absent. It was recently shown that *dnmt3bb.1* is overexpressed at 54 h post-fertilization in the eye, which results in global repression of key eye development genes, such as *opn1lw1*, *gnb3a*, and *crx*. A single intravitreal injection of 5-azacytidine, a DNA methyltransferase inhibitor, resulted in larger eyes, well-defined lens and the formation of retinal layers in the eyeless cave morph,

suggesting that DNA methylation may play a key role in eye regression in cavefish [123].

Finally, several clinical studies highlight the potential importance of DNA methylation in ocular pathologies (Table 1). Considering the importance of DNA methylation as regulator of gene expression during cell fate determination and overall retinal development and homeostasis, it will be interesting to investigate whether there are additional cell-specific or temporal-specific requirements for DNA methylation, demethylation and hydroxymethylation in the retina. Moreover, association between DNA methylation and other epigenetic processes such as the presence and/or turnover of histone variants and histone modifications also need to be evaluated during retinal development and disease to gain a fuller picture of how crosstalk between these epigenetic changes could modulate retinal development and the progression of ocular disease.

### Long non-coding RNA in the developing retina

RNA-based regulatory mechanisms play an important role in numerous developmental processes in eukaryotes. Besides small non-coding RNAs (ncRNAs), mammalian genomes encode numerous long non-coding RNAs (lncRNAs), which are >200 nucleotides in size [124, 125], lncRNAs are mainly located in the nucleus, but can be distributed in the cytoplasm [126]. These molecules are defined as functional ribonucleic acids that do not encode proteins. lncRNAs participate in a number of different cellular processes that include modulation of cell cycle progression; the establishment of chromatin states, via their ability to bind and modulate the activity of chromatin-modifying proteins; modulating chromatin structure; regulating gene expression during development and differentiation; serving as transcriptional co-regulators; and roles in stem cell maintenance and cell lineage commitment [127–132].

Not surprisingly, lncRNAs are expressed in various ocular tissues and in the retina, they are expressed in specific cell types during development [133–136]. For example, in mouse retinal ganglion cells, lncRNAs such as *linc-3a*, *linc-3b* and *linc-3b* are associated with modulating the expression of key regulators of RGC

**Table 1 DNA methylation in ocular disease**

Disease	Gene	DNA modification	References
Age-related macular degeneration (AMD)	<i>SKI, GTF2H4, TNXB, GSTM1/5, IL17RC</i>	Hypermethylation Hypomethylation	[161–164]
Cataract	<i>Klotho, Cryaa, GSTP1, TXNRD2</i>	Hypermethylation	[165–168]
Glaucoma	<i>Alu, Hsp70</i>	Hypomethylation	[169, 170]
*Open-angle glaucoma	<i>*HERV-K</i>	Hypermethylation	

differentiation and specification like *Math5*, *Isl1* and *Pou4f2* [137]. Many lncRNAs exert influence on retinal cell fate specification events during development; for example, lncRNAs such as *Miat*, *Six3os1*, *Tug1*, *Vax2os*, *Rncr4* and *Malat-1* function in the mouse retina and *Megamind* and *Malat-1* function in the zebrafish retina. Other lncRNAs functioning during retinal development are summarized in Table 2. Interestingly aberrant expression of lncRNAs has been associated with visual impairments such as diabetic retinopathy (*Malat1*, *Miat*, *Tdrg1*, *Hottip*, *circHIPK3*) [138–141], retinoblastoma (*Bancr*, *Meg3*) and glaucoma (*CDKN2B-As1*) [124, 141]. Mechanistically, data generated thus far suggest that most of these lncRNAs guide chromatin modifiers, mostly PRC2 and H3K9 methyltransferases, to specific genomic loci to modulate gene expression [127, 142–144]. For instance, lncRNAs, ANRIL, HOTAIR, and HOTTIP interact with, PRC1, PRC2, and MLL, respectively, which facilitate their recruitment to chromatin [145–147]. Future studies in the developing retina and in patients with visual system disorders will undoubtedly shed additional light on the cross-talk between lncRNAs and other epigenetic modifiers as well as their specific functions in the retina.

**Potential crosstalk between epigenetic mechanisms and the mitochondria**

Mitochondrial function is co-regulated by the nucleus; however, mitochondria can also modulate nuclear gene expression, mainly via mitochondrial plasticity and the formation of metabolites that act as cofactors or substrates for DNA and histone-modifying enzymes [148]. For example, acetyl-CoA supplies the acetyl group for histone acetyltransferases (HATs), while S-adenosyl methionine (SAM) donates the methyl group for histone lysine methyltransferases (HMTs). Moreover, DNA methyltransferases use SAM as a methyl donor

[148].  $\alpha$ -Ketoglutarate ( $\alpha$ -KG) is a key intermediate metabolite of the TCA cycle and acts as a cofactor for Jumonji domain demethylases [148–150]. In addition,  $\alpha$ -ketoglutarate is required for TET enzyme activity [148, 150–152], while the mitochondria metabolites succinate and fumarate inhibit both TETs and JMJDs [148]. Taken together, these data suggest that mitochondrial activity could influence the epigenetic landscape, but how this plays out during retinal development remains completely unknown. Given that several retinal pathologies are also associated with mitochondrial dysfunction, it is possible that their function in disease state is directly or indirectly linked to the modulation of epigenetic pathways, an area for future investigation [153–158].

**Conclusions**

In this review, we have discussed the current understanding of epigenetic regulation during retinal development and focused on histones, histone modifications and variants, DNA methylation and lncRNAs, as well as the potential for crosstalk between epigenetic regulation and mitochondrial function. Importantly, while epigenetic regulation clearly plays a critical role during retinal development and in ocular disease, there is far more that needs to be learned. Indeed, for some of these epigenetic regulatory mechanisms, there is little known about if and how they operate during retinal development. Moreover, considering the cross-talk between histone variants, PcG and bivalent modifications in other cell types, it is almost certain that decoding the role of histone variants and deposition mechanisms will shed new light on cell fate determination in the retina. Furthermore, the interplay between these epigenetic mechanisms is essential for cell plasticity and likely contributes to regenerative mechanisms found in the retinae of many non-mammalian vertebrates (reviewed in [6, 159, 160]). Understanding

**Table 2 lncRNAs functioning during retinal development**

LncRNA	Method	Function	References
Tug1	Knockdown in neonatal mouse	Malformation or absences of outer segment photoreceptors	[171]
Vax2os	Overexpression in neonatal mouse	Disturb the cell cycle progression in photoreceptor progenitor cells	[128]
Rncr4	Knockdown in mouse embryos and postnatal mice	Control the uniformity of retina layers	[172]
Six3osi	Knockdown and overexpression in neonatal mouse	Upregulation inhibition normal photoreceptors cell specification, knockdown prevented the differentiation of bipolar cell and Müller glial	[173]
RncR2	Knockdown and overexpression in neonatal mouse	Required for amacrine cell, and Müller glia differentiation	[132]
Malat-1	Knockdown postnatal mouse	Might regulate development of retinal neurodegeneration through CREB signaling, retinal microvascular dysfunction	[174, 175]
ZNF503-AS1	Knockdown in hiPSC-RPE	Inhibit RPE differentiation	[135]
Malat-1	Morpholino knockdown zebrafish embryo	Smaller eyes, defective otic capsule	[176]
Megamind	Morpholino knockdown zebrafish embryo	Regulation of eye development	[177]

how these epigenetic mechanisms facilitate regenerative responses and whether they can be stimulated in non-regenerative mammals should be fruitful in the quest to develop novel therapeutics to treat retinal disorders.

#### Acknowledgements

We are grateful to Pat Hood and Mike Cooley for editorial assistance.

#### Authors' contributions

RR carried out the primary literature search and drafted the article. JMG reviewed and revised the article. MFRF, AHK and IAD edited the manuscript. All authors read and approved the final manuscript.

#### Funding

We acknowledge support from the National Institutes of Health (R01-EY29031 and P30-EY098 to JMG and R01-EY030861 to IAD), an unrestricted grant from Research to Prevent Blindness, New York, NY and the Eye and Ear Foundation of Pittsburgh. RR, MFRF were awarded with research grants from Fundacao de Amparo a Pesquisa do Estado de Sao Paulo (FAPESP #18/07592-4 and #19/01290-9).

#### Availability of data and materials

Not applicable.

#### Ethics approval and consent to participate

Not applicable.

#### Consent for publication

Not applicable.

#### Competing interests

The authors declare that they have no competing interests.

#### Author details

<sup>1</sup> Departamento de Genética E Biologia Evolutiva, Instituto de Biociencias, Universidade de Sao Paulo, Rua Do Matao, 277, Cidade Universitaria, Sao Paulo, SP 05508-090, Brazil. <sup>2</sup> Centro de Matemática, Computação E Cognição, Universidade Federal Do ABC, Santo André, Brazil. <sup>3</sup> Departments of Ophthalmology and Developmental Biology, Louis J. Fox Center for Vision Restoration, University of Pittsburgh School of Medicine, Pittsburgh, PA, USA.

Received: 23 November 2020 Accepted: 28 January 2021

Published online: 09 February 2021

#### References

- Cepko C. Intrinsically different retinal progenitor cells produce specific types of progeny. *Nat Rev Neurosci.* 2014;15(9):615–27.
- Flynn RA, Chang HY. Long noncoding RNAs in cell-fate programming and reprogramming. *Cell Stem Cell.* 2014;14(6):752–61.
- Perino M, Veenstra GJ. Chromatin control of developmental dynamics and plasticity. *Dev Cell.* 2016;38(6):610–20.
- Aldiri I, et al. The dynamic epigenetic landscape of the retina during development, reprogramming, and tumorigenesis. *Neuron.* 2017;94(3):550–568.e10.
- Buono L, Martinez-Morales JR. Retina development in vertebrates: systems biology approaches to understanding genetic programs: on the contribution of next-generation sequencing methods to the characterization of the regulatory networks controlling vertebrate eye development. *BioEssays.* 2020;42(4):e1900187.
- Seritrukul P, Gross JM. Genetic and epigenetic control of retinal development in zebrafish. *Curr Opin Neurobiol.* 2019;59:120–7.
- Mo A, et al. Epigenomic landscapes of retinal rods and cones. *Elife.* 2016;5:e11613.
- Fyodorov DV, et al. Emerging roles of linker histones in regulating chromatin structure and function. *Nat Rev Mol Cell Biol.* 2018;19(3):192–206.
- Bannister AJ, Kouzarides T. Regulation of chromatin by histone modifications. *Cell Res.* 2011;21(3):381–95.
- Rao RC, et al. Dynamic patterns of histone lysine methylation in the developing retina. *Invest Ophthalmol Vis Sci.* 2010;51(12):6784–92.
- Popova EY, et al. Stage and gene specific signatures defined by histones H3K4me2 and H3K27me3 accompany mammalian retina maturation in vivo. *PLoS ONE.* 2012;7(10):e46867.
- Ueno K, et al. Transition of differential histone H3 methylation in photoreceptors and other retinal cells during retinal differentiation. *Sci Rep.* 2016;6:29264.
- Harikumar A, Meshorer E. Chromatin remodeling and bivalent histone modifications in embryonic stem cells. *EMBO Rep.* 2015;16(12):1609–19.
- Voigt P, Tee WW, Reinberg D. A double take on bivalent promoters. *Genes Dev.* 2013;27(12):1318–38.
- Ernst J, Kellis M. Chromatin-state discovery and genome annotation with ChromHMM. *Nat Protoc.* 2017;12(12):2478–92.
- Dvorianchikova G, Seemungal RJ, Ivanov D. The epigenetic basis for the impaired ability of adult murine retinal pigment epithelium cells to regenerate retinal tissue. *Sci Rep.* 2019;9(1):3860.
- Henikoff S, Smith MM. Histone variants and epigenetics. *Cold Spring Harb Perspect Biol.* 2015;7(1):a019364.
- Wu G, et al. Somatic histone H3 alterations in pediatric diffuse intrinsic pontine gliomas and non-brainstem glioblastomas. *Nat Genet.* 2012;44(3):251–3.
- Sturm D, et al. Hotspot mutations in H3F3A and IDH1 define distinct epigenetic and biological subgroups of glioblastoma. *Cancer Cell.* 2012;22(4):425–37.
- Creyghton MP, et al. H2AZ is enriched at polycomb complex target genes in ES cells and is necessary for lineage commitment. *Cell.* 2008;135(4):649–61.
- Economopoulou M, et al. Histone H2AX is integral to hypoxia-driven neovascularization. *Nat Med.* 2009;15(5):553–8.
- Popova EY, et al. Developmentally regulated linker histone H1c promotes heterochromatin condensation and mediates structural integrity of rod photoreceptors in mouse retina. *J Biol Chem.* 2013;288(24):17895–907.
- Wang W, et al. Histone HIST1H1C/H1.2 regulates autophagy in the development of diabetic retinopathy. *Autophagy.* 2017;13(5):941–54.
- Schneider R, Bannister AJ, Kouzarides T. Unsafe SETs: histone lysine methyltransferases and cancer. *Trends Biochem Sci.* 2002;27(8):396–402.
- Zhang K, Dent SY. Histone modifying enzymes and cancer: going beyond histones. *J Cell Biochem.* 2005;96(6):1137–48.
- Butler JS, et al. Histone-modifying enzymes: regulators of developmental decisions and drivers of human disease. *Epigenomics.* 2012;4(2):163–77.
- Hyun K, et al. Writing, erasing and reading histone lysine methylations. *Exp Mol Med.* 2017;49(4):e324.
- Qian C, Zhou MM. SET domain protein lysine methyltransferases: structure, specificity and catalysis. *Cell Mol Life Sci.* 2006;63(23):2755–63.
- Barrero MJ, Izpisua Belmonte JC. Polycomb complex recruitment in pluripotent stem cells. *Nat Cell Biol.* 2013;15(4):348–50.
- Schwartz YB, Pirrotta V. Polycomb silencing mechanisms and the management of genomic programmes. *Nat Rev Genet.* 2007;8(1):9–22.
- Tyagi S, Herr W. E2F1 mediates DNA damage and apoptosis through HCF-1 and the MLL family of histone methyltransferases. *Embo J.* 2009;28(20):3185–95.
- Geng Z, Gao Z. Mammalian PRC1 complexes: compositional complexity and diverse molecular mechanisms. *Int J Mol Sci.* 2020;21(22):8594.
- Deevy O, Bracken AP. PRC2 functions in development and congenital disorders. *Development.* 2019. <https://doi.org/10.1242/dev.181354>.
- Shen X, et al. EZH1 mediates methylation on histone H3 lysine 27 and complements EZH2 in maintaining stem cell identity and executing pluripotency. *Mol Cell.* 2008;32(4):491–502.
- Hirabayashi Y, et al. Polycomb limits the neurogenic competence of neural precursor cells to promote astrogenic fate transition. *Neuron.* 2009;63(5):600–13.
- Barabino A, et al. Loss of Bmi1 causes anomalies in retinal development and degeneration of cone photoreceptors. *Development.* 2016;143(9):1571–84.
- Chattoo W, et al. Bmi1 distinguishes immature retinal progenitor/stem cells from the main progenitor cell population and is required for normal retinal development. *Stem Cells.* 2010;28(8):1412–23.

38. Kovacs G, Szabo V, Pirity MK. Absence of Rybp compromises neural differentiation of embryonic stem cells. *Stem Cells Int.* 2016;2016:4034620.
39. Novak RL, Phillips AC. Adenoviral-mediated Rybp expression promotes tumor cell-specific apoptosis. *Cancer Gene Ther.* 2008;15(11):713–22.
40. Pirity MK, et al. Rybp, a polycomb complex-associated protein, is required for mouse eye development. *BMC Dev Biol.* 2007;7:39.
41. Omori Y, et al. Samd7 is a cell type-specific PRC1 component essential for establishing retinal rod photoreceptor identity. *Proc Natl Acad Sci U S A.* 2017;114(39):E8264–73.
42. Hlawatsch J, et al. Sterile alpha motif containing 7 (samd7) is a novel crx-regulated transcriptional repressor in the retina. *PLoS ONE.* 2013;8(4):e060633.
43. Fujimura N, et al. Polycomb repression complex 2 is required for the maintenance of retinal progenitor cells and balanced retinal differentiation. *Dev Biol.* 2018;433(1):47–60.
44. Aldiri I, et al. Polycomb repressive complex PRC2 regulates *Xenopus* retina development downstream of Wnt/ $\beta$ -catenin signaling. *Development.* 2013;140(14):2867–78.
45. Iida A, et al. Roles of histone H3K27 trimethylase Ezh2 in retinal proliferation and differentiation. *Dev Neurobiol.* 2015;75(9):947–60.
46. Pan MR, et al. Orchestration of H3K27 methylation: mechanisms and therapeutic implication. *Cell Mol Life Sci.* 2018;75(2):209–23.
47. Zhang J, et al. Ezh2 maintains retinal progenitor proliferation, transcriptional integrity, and the timing of late differentiation. *Dev Biol.* 2015;403(2):128–38.
48. Yan N, et al. Postnatal onset of retinal degeneration by loss of embryonic Ezh2 repression of Six1. *Sci Rep.* 2016;6:33887.
49. Loubiere V, et al. Coordinate redeployment of PRC1 proteins suppresses tumor formation during *Drosophila* development. *Nat Genet.* 2016;48(11):1436–42.
50. Schuettengruber B, et al. Genome regulation by polycomb and trithorax proteins. *Cell.* 2007;128(4):735–45.
51. Mozzetta C, et al. The histone H3 lysine 9 methyltransferases G9a and GLP regulate polycomb repressive complex 2-mediated gene silencing. *Mol Cell.* 2014;53(2):277–89.
52. Katoh K, et al. G9a histone methyltransferase activity in retinal progenitors is essential for proper differentiation and survival of mouse retinal cells. *J Neurosci.* 2012;32(49):17658–70.
53. Di Croce L, Helin K. Transcriptional regulation by Polycomb group proteins. *Nat Struct Mol Biol.* 2013;20(10):1147–55.
54. Morgan MAJ, Shilatifard A. Reevaluating the roles of histone-modifying enzymes and their associated chromatin modifications in transcriptional regulation. *Nat Genet.* 2020;52(12):1271–81.
55. Piunti A, Shilatifard A. Epigenetic balance of gene expression by Polycomb and COMPASS families. *Science.* 2016;352(6290):aad9780.
56. Brightman DS, et al. MLL1 is essential for retinal neurogenesis and horizontal inner neuron integrity. *Sci Rep.* 2018;8(1):11902.
57. Kanda H, et al. The *Drosophila* ortholog of MLL3 and MLL4, trithorax related, functions as a negative regulator of tissue growth. *Mol Cell Biol.* 2013;33(9):1702–10.
58. Herz HM, et al. Enhancer-associated H3K4 monomethylation by Trithorax-related, the *Drosophila* homolog of mammalian Mll3/Mll4. *Genes Dev.* 2012;26(23):2604–20.
59. Kim JW, et al. Transcriptional activity of neural retina leucine zipper (Nrl) is regulated by c-Jun N-terminal kinase and Tip60 during retina development. *Mol Cell Biol.* 2012;32(9):1720–32.
60. Hennig AK, Peng GH, Chen S. Transcription coactivators p300 and CBP are necessary for photoreceptor-specific chromatin organization and gene expression. *PLoS ONE.* 2013;8(7):e69721.
61. Wolf L, et al. Histone posttranslational modifications and cell fate determination: lens induction requires the lysine acetyltransferases CBP and p300. *Nucleic Acids Res.* 2013;41(22):10199–214.
62. Kooistra SM, Helin K. Molecular mechanisms and potential functions of histone demethylases. *Nat Rev Mol Cell Biol.* 2012;13(5):297–311.
63. Johansson C, et al. The roles of Jumonji-type oxygenases in human disease. *Epigenomics.* 2014;6(1):89–120.
64. Pedersen MT, Helin K. Histone demethylases in development and disease. *Trends Cell Biol.* 2010;20(11):662–71.
65. Nottke A, Colaiacovo MP, Shi Y. Developmental roles of the histone lysine demethylases. *Development.* 2009;136(6):879–89.
66. Seto E, Yoshida M. Erasers of histone acetylation: the histone deacetylase enzymes. *Cold Spring Harb Perspect Biol.* 2014;6(4):a018713.
67. Musselman CA, et al. Perceiving the epigenetic landscape through histone readers. *Nat Struct Mol Biol.* 2012;19(12):1218–27.
68. Cloos PA, et al. Erasing the methyl mark: histone demethylases at the center of cellular differentiation and disease. *Genes Dev.* 2008;22(9):1115–40.
69. Iida A, et al. Histone demethylase Jmjd3 is required for the development of subsets of retinal bipolar cells. *Proc Natl Acad Sci U S A.* 2014;111(10):3751–6.
70. Iwagawa T, Watanabe S. Molecular mechanisms of H3K27me3 and H3K4me3 in retinal development. *Neurosci Res.* 2019;138:43–8.
71. Raeisossadati R, et al. Small molecule GSK-J1 affects differentiation of specific neuronal subtypes in developing rat retina. *Mol Neurobiol.* 2019;56(3):1972–83.
72. Kawaguchi A, et al. Comparative expression analysis of the H3K27 demethylases, JMJD3 and UTX, with the H3K27 methylase, EZH2 *Xenopus*. *Int J Dev Biol.* 2012;56(4):295–300.
73. Kim Y, et al. Physiological effects of KDM5C on neural crest migration and eye formation during vertebrate development. *Epigenet Chromatin.* 2018;11(1):72.
74. Bose J, et al. The phosphatidylserine receptor has essential functions during embryogenesis but not in apoptotic cell removal. *J Biol.* 2004;3(4):15.
75. Fukuda T, et al. Fbxl10/Kdm2b deficiency accelerates neural progenitor cell death and leads to exencephaly. *Mol Cell Neurosci.* 2011;46(3):614–24.
76. Shi YG, Tsukada Y. The discovery of histone demethylases. *Cold Spring Harb Perspect Biol.* 2013;5(9):a017947.
77. Ferdous S, et al. Characterization of LSD1 Expression Within the Murine Eye. *Invest Ophthalmol Vis Sci.* 2019;60(14):4619–31.
78. Popova EY, et al. LSD1-mediated demethylation of H3K4me2 is required for the transition from late progenitor to differentiated mouse rod photoreceptor. *Mol Neurobiol.* 2016;53(7):4563–81.
79. Zheng S, et al. DZNep inhibits H3K27me3 deposition and delays retinal degeneration in the rd1 mice. *Cell Death Dis.* 2018;9(3):310.
80. Ferreira RC, et al. Histone deacetylase 1 is essential for rod photoreceptor differentiation by regulating acetylation at histone H3 lysine 9 and histone H4 lysine 12 in the mouse retina. *J Biol Chem.* 2017;292(6):2422–40.
81. Stadler JA, et al. Histone deacetylase 1 is required for cell cycle exit and differentiation in the zebrafish retina. *Dev Dyn.* 2005;233(3):883–9.
82. Cheng HL, et al. Developmental defects and p53 hyperacetylation in Sir2 homolog (SIRT1)-deficient mice. *Proc Natl Acad Sci U S A.* 2003;100(19):10794–9.
83. Sokpor G, et al. Chromatin remodeling BAF (SWI/SNF) complexes in neural development and disorders. *Front Mol Neurosci.* 2017;10:243.
84. Staahl BT, et al. Kinetic analysis of npBAF to nBAF switching reveals exchange of SS18 with CREST and integration with neural developmental pathways. *J Neurosci.* 2013;33(25):10348–61.
85. Leung YF, et al. Factorial microarray analysis of zebrafish retinal development. *Proc Natl Acad Sci U S A.* 2008;105(35):12909–14.
86. Link BA, et al. The zebrafish young mutation acts non-cell-autonomously to uncouple differentiation from specification for all retinal cells. *Development.* 2000;127(10):2177–88.
87. Aldiri I, et al. Brg1 coordinates multiple processes during retinogenesis and is a tumor suppressor in retinoblastoma. *Development.* 2015;142(23):4092–106.
88. He S, et al. Chromatin remodeling enzyme Snf2h regulates embryonic lens differentiation and denucleation. *Development.* 2016;143(11):1937–47.
89. Das AV, et al. SWI/SNF chromatin remodeling ATPase Brm regulates the differentiation of early retinal stem cells/progenitors by influencing Brn3b expression and Notch signaling. *J Biol Chem.* 2007;282(48):35187–201.
90. Lamba DA, et al. Baf60c is a component of the neural progenitor-specific BAF complex in developing retina. *Dev Dyn.* 2008;237(10):3016–23.
91. Patten SA, et al. Role of Chd7 in zebrafish: a model for CHARGE syndrome. *PLoS ONE.* 2012;7(2):e31650.
92. Gage PJ, Hurd EA, Martin DM. Mouse models for the dissection of CHD7 functions in eye development and the molecular basis for

- ocular defects in CHARGE syndrome. *Invest Ophthalmol Vis Sci.* 2015;56(13):7923–30.
93. Norrie JL, et al. Nucleome dynamics during retinal development. *Neuron.* 2019;104(3):512–528.e11.
  94. Solovei I, et al. LBR and lamin A/C sequentially tether peripheral heterochromatin and inversely regulate differentiation. *Cell.* 2013;152(3):584–98.
  95. Solovei I, et al. Nuclear architecture of rod photoreceptor cells adapts to vision in mammalian evolution. *Cell.* 2009;137(2):356–68.
  96. Mattar P, et al. Casz1 controls higher-order nuclear organization in rod photoreceptors. *Proc Natl Acad Sci U S A.* 2018;115(34):E7987–96.
  97. Hughes AE, et al. Cell type-specific epigenomic analysis reveals a uniquely closed chromatin architecture in mouse rod photoreceptors. *Sci Rep.* 2017;7:43184.
  98. Zibetti C, et al. Epigenomic profiling of retinal progenitors reveals LHX2 is required for developmental regulation of open chromatin. *Commun Biol.* 2019;2:142.
  99. Hoshino A, et al. Molecular anatomy of the developing human retina. *Dev Cell.* 2017;43(6):763–779.e4.
  100. Xie H, et al. Chromatin accessibility analysis reveals regulatory dynamics of developing human retina and hiPSC-derived retinal organoids. *Sci Adv.* 2020;6(6):eaay5247.
  101. Georges A, Takeda H, Lavergne A, Mandai M, Lepienne F, Karim L, Demeulenaere L, Schyns M, Nguyen L, Rakic JM, Takahashi M. Combined analysis of single cell RNA-Seq and ATAC-Seq data reveals regulatory toggles operating in native and iPSC-derived retina; 2020. <https://doi.org/10.1101/2020.03.02.972497v1>.
  102. Wang L, et al. Retinal cell type DNA methylation and histone modifications predict reprogramming efficiency and retinogenesis in 3D organoid cultures. *Cell Rep.* 2018;22(10):2601–14.
  103. Luu J, et al. Epigenetic hallmarks of age-related macular degeneration are recapitulated in a photosensitive mouse model. *Hum Mol Genet.* 2020;29(15):2611–24.
  104. Wang J, et al. ATAC-Seq analysis reveals a widespread decrease of chromatin accessibility in age-related macular degeneration. *Nat Commun.* 2018;9(1):1364.
  105. Rasmussen KD, Helin K. Role of TET enzymes in DNA methylation, development, and cancer. *Genes Dev.* 2016;30(7):733–50.
  106. Zhou FC. DNA methylation program during development. *Front Biol (Beijing).* 2012;7(6):485–94.
  107. Szulwach KE, et al. 5-hmC-mediated epigenetic dynamics during postnatal neurodevelopment and aging. *Nat Neurosci.* 2011;14(12):1607–16.
  108. Merbs SL, et al. Cell-specific DNA methylation patterns of retina-specific genes. *PLoS ONE.* 2012;7(3):e32602.
  109. Dvorianchikova G, Seemungal RJ, Ivanov D. DNA Methylation dynamics during the differentiation of retinal progenitor cells into retinal neurons reveal a role for the DNA demethylation pathway. *Front Mol Neurosci.* 2019;12:182.
  110. Corso-Diaz X, et al. Genome-wide profiling identifies DNA methylation signatures of aging in rod photoreceptors associated with alterations in energy metabolism. *Cell Rep.* 2020;31(3):107525.
  111. Rai K, et al. Zebra fish Dnmt1 and Suv39h1 regulate organ-specific terminal differentiation during development. *Mol Cell Biol.* 2006;26(19):7077–85.
  112. Rai K, et al. Dnmt3 and G9a cooperate for tissue-specific development in zebrafish. *J Biol Chem.* 2010;285(6):4110–21.
  113. Angileri KM, Gross JM. dnmt1 function is required to maintain retinal stem cells within the ciliary marginal zone of the zebrafish eye. *Sci Rep.* 2020;10(1):11293.
  114. Tittle RK, et al. Uhrf1 and Dnmt1 are required for development and maintenance of the zebrafish lens. *Dev Biol.* 2011;350(1):50–63.
  115. Rai K, et al. Dnmt2 functions in the cytoplasm to promote liver, brain, and retina development in zebrafish. *Genes Dev.* 2007;21(3):261–6.
  116. Rhee KD, et al. Dnmt1-dependent DNA methylation is essential for photoreceptor terminal differentiation and retinal neuron survival. *Cell Death Dis.* 2012;3:e427.
  117. Nasonkin IO, et al. Conditional knockdown of DNA methyltransferase 1 reveals a key role of retinal pigment epithelium integrity in photoreceptor outer segment morphogenesis. *Development.* 2013;140(6):1330–41.
  118. Singh RK, et al. Dnmt1, Dnmt3a and Dnmt3b cooperate in photoreceptor and outer plexiform layer development in the mammalian retina. *Exp Eye Res.* 2016;159:132–46.
  119. Yang J, et al. The roles of TET family proteins in development and stem cells. *Development.* 2020. <https://doi.org/10.1242/dev.183129>.
  120. Serittrakul P, Gross JM. Tet-mediated DNA hydroxymethylation regulates retinal neurogenesis by modulating cell-extrinsic signaling pathways. *PLoS Genet.* 2017;13(9):e1006987.
  121. Xu Y, et al. Tet3 CXXC domain and dioxygenase activity cooperatively regulate key genes for *Xenopus* eye and neural development. *Cell.* 2012;151(6):1200–13.
  122. Moran D, Softley R, Warrant EJ. The energetic cost of vision and the evolution of eyeless Mexican cavefish. *Sci Adv.* 2015;1(8):e1500363.
  123. Gore AV, et al. An epigenetic mechanism for cavefish eye degeneration. *Nat Ecol Evol.* 2018;2(7):1155–60.
  124. Wan P, Su W, Zhuo Y. Precise long non-coding RNA modulation in visual maintenance and impairment. *J Med Genet.* 2016;54:450–9.
  125. Guttman M, et al. Chromatin signature reveals over a thousand highly conserved large non-coding RNAs in mammals. *Nature.* 2009;458(7235):223–7.
  126. Kapranov P, et al. RNA maps reveal new RNA classes and a possible function for pervasive transcription. *Science.* 2007;316(5830):1484–8.
  127. Khalil AM, et al. Many human large intergenic noncoding RNAs associate with chromatin-modifying complexes and affect gene expression. *Proc Natl Acad Sci U S A.* 2009;106(28):11667–72.
  128. Meola N, et al. The long noncoding RNA Vax2os1 controls the cell cycle progression of photoreceptor progenitors in the mouse retina. *RNA.* 2012;18(1):11–23.
  129. Feng J, et al. The Evi-2 noncoding RNA is transcribed from the Dlx-5/6 ultraconserved region and functions as a Dlx-2 transcriptional coactivator. *Genes Dev.* 2006;20(11):1470–84.
  130. Bohmdorfer G, Wierzbicki AT. Control of chromatin structure by long noncoding RNA. *Trends Cell Biol.* 2015;25(10):623–32.
  131. Guttman M, et al. lincRNAs act in the circuitry controlling pluripotency and differentiation. *Nature.* 2011;477(7364):295–300.
  132. Rapicavoli NA, Poth EM, Blackshaw S. The long noncoding RNA RNCR2 directs mouse retinal cell specification. *BMC Dev Biol.* 2010;10:49.
  133. Zelinger L, et al. Regulation of noncoding transcriptome in developing photoreceptors by rod differentiation factor NRL. *Invest Ophthalmol Vis Sci.* 2017;58(11):4422–35.
  134. Chen W, et al. The long noncoding RNA landscape of the mouse eye. *Invest Ophthalmol Vis Sci.* 2017;58(14):6308–17.
  135. Chen X, et al. LncRNA ZNF503-AS1 promotes RPE differentiation by downregulating ZNF503 expression. *Cell Death Dis.* 2017;8(9):e3046.
  136. Mustafi D, et al. Evolutionarily conserved long intergenic non-coding RNAs in the eye. *Hum Mol Genet.* 2013;22(15):2992–3002.
  137. Wan Y, et al. Systematic identification of intergenic long-noncoding RNAs in mouse retinas using full-length isoform sequencing. *BMC Genomics.* 2019;20(1):559.
  138. Gong Q, et al. LncRNA TDRG1-Mediated Overexpression of VEGF aggravated retinal microvascular endothelial cell dysfunction in diabetic retinopathy. *Front Pharmacol.* 2019;10:1703.
  139. Sun Y, Liu YX. LncRNA HOTTIP improves diabetic retinopathy by regulating the p38-MAPK pathway. *Eur Rev Med Pharmacol Sci.* 2018;22(10):2941–8.
  140. Shan K, et al. Circular noncoding RNA HIPK3 mediates retinal vascular dysfunction in diabetes mellitus. *Circulation.* 2017;136(17):1629–42.
  141. Li F, et al. Novel insights into the role of long noncoding RNA in ocular diseases. *Int J Mol Sci.* 2016;17(4):478.
  142. Rinn JL, Chang HY. Genome regulation by long noncoding RNAs. *Annu Rev Biochem.* 2012;81:145–66.
  143. Guttman M, Rinn JL. Modular regulatory principles of large non-coding RNAs. *Nature.* 2012;482(7385):339–46.
  144. Nagano T, et al. The Air noncoding RNA epigenetically silences transcription by targeting G9a to chromatin. *Science.* 2008;322(5908):1717–20.
  145. Rinn JL, et al. Functional demarcation of active and silent chromatin domains in human HOX loci by noncoding RNAs. *Cell.* 2007;129(7):1311–23.
  146. Wang KC, et al. A long noncoding RNA maintains active chromatin to coordinate homeotic gene expression. *Nature.* 2011;472(7341):120–4.

147. Yap KL, et al. Molecular interplay of the noncoding RNA ANRIL and methylated histone H3 lysine 27 by polycomb CBX7 in transcriptional silencing of INK4a. *Mol Cell*. 2010;38(5):662–74.
148. Matilainen O, Quiros PM, Auwerx J. Mitochondria and epigenetics—crosstalk in homeostasis and stress. *Trends Cell Biol*. 2017;27(6):453–63.
149. Cyr AR, Domann FE. The redox basis of epigenetic modifications: from mechanisms to functional consequences. *Antioxid Redox Signal*. 2011;15(2):551–89.
150. Schwartzman JM, Thompson CB, Finley LWS. Metabolic regulation of chromatin modifications and gene expression. *J Cell Biol*. 2018;217(7):2247–59.
151. Patananan AN, Sercel AJ, Teitel MA. More than a powerplant: the influence of mitochondrial transfer on the epigenome. *Curr Opin Physiol*. 2018;3:16–24.
152. Lamadema N, Burr S, Brewer AC. Dynamic regulation of epigenetic demethylation by oxygen availability and cellular redox. *Free Radic Biol Med*. 2019;131:282–98.
153. Tewari S, Santos JM, Kowluru RA. Damaged mitochondrial DNA replication system and the development of diabetic retinopathy. *Antioxid Redox Signal*. 2012;17(3):492–504.
154. Zhong Q, Kowluru RA. Diabetic retinopathy and damage to mitochondrial structure and transport machinery. *Invest Ophthalmol Vis Sci*. 2011;52(12):8739–46.
155. Tien T, et al. High glucose induces mitochondrial dysfunction in retinal muller cells: implications for diabetic retinopathy. *Invest Ophthalmol Vis Sci*. 2017;58(7):2915–21.
156. Feher J, et al. Mitochondrial alterations of retinal pigment epithelium in age-related macular degeneration. *Neurobiol Aging*. 2006;27(7):983–93.
157. Golestaneh N, et al. Dysfunctional autophagy in RPE, a contributing factor in age-related macular degeneration. *Cell Death Dis*. 2017;8(1):e2537.
158. Ferrington DA, Fisher CR, Kowluru RA. Mitochondrial defects drive degenerative retinal diseases. *Trends Mol Med*. 2020;26(1):105–18.
159. Lahne M, et al. Reprogramming muller glia to regenerate retinal neurons. *Annu Rev Vis Sci*. 2020;6:171–93.
160. VandenBosch LS, Reh TA. Epigenetics in neuronal regeneration. *Semin Cell Dev Biol*. 2020;97:63–73.
161. Porter LF, et al. Whole-genome methylation profiling of the retinal pigment epithelium of individuals with age-related macular degeneration reveals differential methylation of the SKI, GTF2H4, and TNXB genes. *Clin Epigenet*. 2019;11(1):6.
162. Oliver VF, et al. Differential DNA methylation identified in the blood and retina of AMD patients. *Epigenetics*. 2015;10(8):698–707.
163. Hunter A, et al. DNA methylation is associated with altered gene expression in AMD. *Invest Ophthalmol Vis Sci*. 2012;53(4):2089–105.
164. Wei L, et al. Hypomethylation of the IL17RC promoter associates with age-related macular degeneration. *Cell Rep*. 2012;2(5):1151–8.
165. Jin SL, et al. Epigenetic changes of the Klotho gene in age-related cataracts. *Eur Rev Med Pharmacol Sci*. 2015;19(14):2544–53.
166. Zhou P, et al. Down-regulation and CpG island hypermethylation of CRYAA in age-related nuclear cataract. *FASEB J*. 2012;26(12):4897–902.
167. Wang Y, et al. Altered DNA methylation and expression profiles of 8-oxoguanine dna glycosylase 1 in lens tissue from age-related cataract patients. *Curr Eye Res*. 2015;40(8):815–21.
168. Zhu X, et al. DNA hypermethylation-mediated downregulation of antioxidant genes contributes to the early onset of cataracts in highly myopic eyes. *Redox Biol*. 2018;19:179–89.
169. Chansangpetch S, et al. DNA methylation status of the interspersed repetitive sequences for LINE-1, Alu, HERV-E, and HERV-K in trabeculectomy specimens from glaucoma eyes. *J Ophthalmol*. 2018;2018:9171536.
170. Hayat B, et al. Epigenetic silencing of heat shock protein 70 through DNA hypermethylation in pseudoexfoliation syndrome and glaucoma. *J Hum Genet*. 2020;65:517–29.
171. Young TL, Matsuda T, Cepko CL. The noncoding RNA taurine upregulated gene 1 is required for differentiation of the murine retina. *Curr Biol*. 2005;15(6):501–12.
172. Krol J, et al. A network comprising short and long noncoding RNAs and RNA helicase controls mouse retina architecture. *Nat Commun*. 2015;6:7305.
173. Rapicavoli NA, et al. The long noncoding RNA Six3OS acts in trans to regulate retinal development by modulating Six3 activity. *Neural Dev*. 2011;6:32.
174. Yao J, et al. Long non-coding RNA MALAT1 regulates retinal neurodegeneration through CREB signaling. *EMBO Mol Med*. 2016;8(4):346–62.
175. Liu JY, et al. Pathogenic role of lncRNA-MALAT1 in endothelial cell dysfunction in diabetes mellitus. *Cell Death Dis*. 2014;5:e1506.
176. Wu M, et al. Expression and function of lncRNA MALAT-1 in the embryonic development of zebrafish. *Gene*. 2019;680:65–71.
177. Ulitsky I, et al. Conserved function of lincRNAs in vertebrate embryonic development despite rapid sequence evolution. *Cell*. 2011;147(7):1537–50.

## Publisher's Note

Springer Nature remains neutral with regard to jurisdictional claims in published maps and institutional affiliations.

Ready to submit your research? Choose BMC and benefit from:

- fast, convenient online submission
- thorough peer review by experienced researchers in your field
- rapid publication on acceptance
- support for research data, including large and complex data types
- gold Open Access which fosters wider collaboration and increased citations
- maximum visibility for your research: over 100M website views per year

At BMC, research is always in progress.

Learn more [biomedcentral.com/submissions](https://biomedcentral.com/submissions)

